

## No. 2 cottages

Fig. 13 (right) Plans of No. 2 cottages at Appleby, 1872

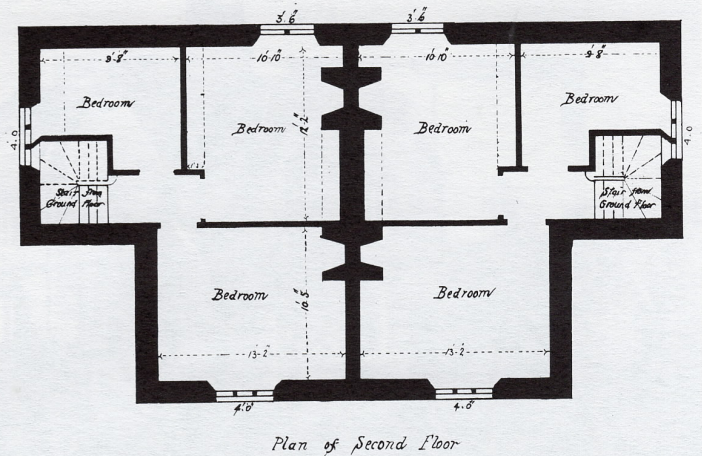
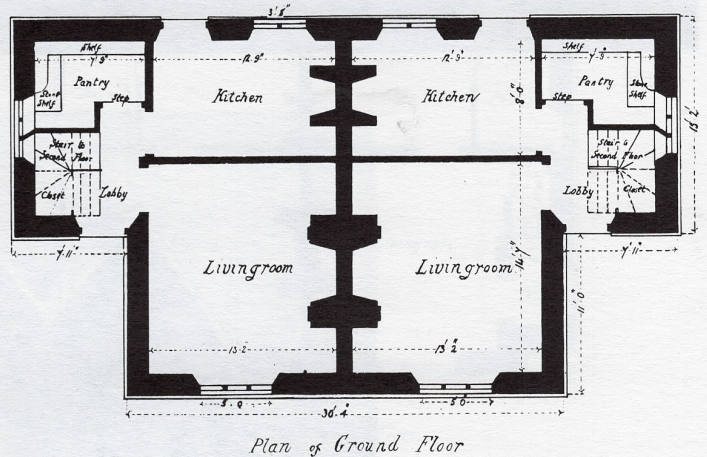


Fig. 14 (below) The cottages in Ermine Street, photographed c. 1880, shortly after completion, by James Walsham Hall of Winterton. Note the earlier thatched whitewashed building to the left (Scunthorpe Borough Museum and Art Gallery)



Feet 0 5 10 15 20 Feet Appleby Hall 27th May 1872 Robert Gutter

