

YOUR COMMUNITY NEWSLETTER

Seasonal updates and information for the residents of Appleby, Santon & Clapp Gate area

Broadband Update

Broadband for Appleby Village and Parish

Councillor Ivor Keyes

In previous Newsletters it's been reported that Appleby Village would be getting superfast broadband, whilst the harder to reach parts of the Parish will be offered a wireless solution.

For those areas where wireless is the only practical solution the Parish Council arranged a meeting for residents with Quickline Communications, a Hull based wireless internet service provider. The meeting was held on 21 July at the village hall, some 15 residents attended.

Whilst not recommending any specific provider it was felt as Quickline has been deployed to run a pilot scheme by North Lincolnshire and North East Lincolnshire Councils and already operate in the parish they would be best placed to provide interested residents with further information.

Some local residents already use wireless broadband with varying degrees of success, with a few around the Santon area reporting weak signals

Asking Quickline about signals strength they say due to delays in local authority planning in respect of heritage assessments taking several months longer than anticipated have deployed two temporary masts

The permanent masts, which are taller than the temporary ones, are scheduled for the end of the year and will further improve coverage

The latest update from Paul Schofield of North Lincolnshire Council Broadband Team (NLBB) regarding Fibre To The Cabinet (FTTC) for superfast broadband for Appleby Village is:

"We are currently in the planning and mobilisation phase of the rollout, this takes 6 months, it started in June 2015 and will run until the end of the year. Once this is complete we will see works starting on the deployment of superfast broadband.

We have asked for Appleby to be at the top of the upgrade list and it has been confirmed that you will be in our first phase of deployment which will see upgrades coming online between April 2016 and September 2016.

Please be aware, and it is important to note, that these timescales are based on desktop planning. This means once on site surveys and work on the actual deployment starts, there could be unforeseen issues that arise and slow the deployment."

More information will be published on progress in the next newsletter.

Parish Council Keeping You Informed

Councillor Derek Hall

Chairman Appleby Parish Council

Neighbourhood Plan (NHP) is about local people deciding how their community develops. Once a plan aligned to their wishes and approved by them is accepted by the local authority, in our case North Lincolnshire District Council (NLDC), the Council is obliged, by law, to take account of it when considering planning applications affecting the parish.

As part of the process of producing a Neighbourhood Plan for the parish of Appleby in late August a community questionnaire was delivered to all households in the Parish. (Appleby village itself, the Station area, Santon, and Clapp Gate.)

Many thanks for all who completed the questionnaire. At pages 3 and 4 of this newsletter there is an overview of your responses.

I wish also to thank the NHP Group, lead by Joy Powell, they have spent many hours 'number crunching', analysing data and consolidating information. This has not been easy as the task has been in addition to other working and life commitments.

If you would like to see more details on the survey these are available on the hosted website at <http://www.appleby-lincs.co.uk/neighbourhoodplan/>

The budget for 2016/17 will be discussed at a Parish Council meeting on Monday 2nd November, when plans for our precept from North Lincolnshire Council will be formulated. The Parish Council would welcome suggestions as to how residents would like to see the parish progress and how funding could be spent to enhance the area. The Neighbourhood Plan is highlighted in this newsletter but the sub-committee wants to hear your views as any plan has a cost implication, which has to be budgeted for.

Village Signs Plans are afoot to repair and enhance the village signs, primarily in Santon. Over the years these signs, which are on the approach to the village, have become 'care-worn' and are in need of refurbishment. Money will be found to upgrade these and provide a fitting 'advertisement' of both Appleby and Santon.

New village notice boards The Parish Council were successful in obtaining £1,000 from the North Lincolnshire Council's "Community Grants" scheme, in order that we could be purchased new notice boards and village signs. These will be installed in the next few weeks and our thanks are extended to NLC for this grant.

Allotments in the parish have been a long and protracted saga since our plans were formulated in 2012. The initial site was in Church Lane next to St. Bartholomew's Church, but after careful consideration and site visits, plus many consultations with the Agents on behalf of the Estate, it was decided that there were too many 'obstacles' in our way - not least being the cost per plot. This site was then 'shelved' and other, more accessible sites were looked at. This is still ongoing and we will update the village in due course as to the progress.

The Flower Presentation and Produce Show recently held was a great success and the Parish Councillors thank the organisers for their hard work, and carrying on the excellent tradition set by the late Ralph Welch and our Freeman of the Parish, Colin Worsley. It was my great honour and tremendous pleasure to present the certificates and cheques to the winners of the Best Kept Gardens, Pots and Plants, and Decorative Hedges in the village. Keep up the good work - your efforts are appreciated.

Casual Vacancy The Parish Council now has two vacancies for councillors following the resignation due to ill-health of Councillor Jackie Johnson, and Councillor Paul Fish. If you have an interest in local 'politics' and would like to help Appleby grow, then why not volunteer to be a parish councillor and have a say in how the village 'works'. Meetings are held 9 or 10 times a year in the Village Hall on a Monday evening, and last no longer than two hours. So why not come and join us and be part of the team !

St Bartholomew's

Revd Alice Nunn

Though I sadly missed the recent Open Gardens (I was on Holiday...arranged ages before I knew about this event) but understand that it was a tremendous success, the gardens were lovely, the catering brilliant and a lot of hard work by many people. It is impossible to enumerate you all, but special thanks are due to the relative newcomers to our community Rick and Laura Prior, whose idea it all was. And, as well as being hugely enjoyable also benefitted our lovely church.

Keeping this building in good repair is really helped by such generosity.

As the days shorten, and the chill grows, I know some parishioners who are regular churchgoers rather dread the chill in church! One advantage of wearing all the ecclesiastical kit, is that you can put many layers on underneath, and though it might make me look even stouter than I am, it serves to keep me fairly warm. However due to a lot of hard work from our Churchwarden John Jeremiah and the PCC, we are hoping that some improvements will soon be in place, though we don't recommend leaving layers off just yet!

Do consider joining us some Sundays, you will be most welcome. Usually services are held on the 1st Sunday of the month at 9.15, and the 3rd Sunday at 8.00. But it's a good idea to check out the magazine in case there are other events or services taking place.

For instance we will be marking Remembrance Sunday on 8th November at 10.30, at the War Memorial.

It's a bit early to have any definite dates for Christmas services, but very soon we will be firming up on arrangements. Watch out for a Carol service and other services in the next issue.

Harvest Supper

Rosemary Jeremiah

Sixty villagers and friends came to the village hall on Wednesday 30th September to celebrate the harvest and enjoy a pie and pea supper together. Alice our vicar led a short service of blessing and those present joined in to sing 3 popular harvest hymns.

The pies and mushy peas were delicious followed by a variety of superb desserts supplied by generous villagers. A raffle followed with many donated prizes. A fun evening with a total of £309 profit raised for St. Bartholomew's Church.

Many thanks to all those who helped set up and put away the tables, provided raffle prizes and desserts and generally helped in so many ways on the day.

Appleby Parish Neighbourhood Plan (NHP) Results of Community Questionnaire

Section 1 – AROUND THE PARISH

This section contained questions about Likes and Dislikes in the Parish, what was important to respondents, and views on housing growth. The % shown is the total of those who said they agreed or strongly agreed with the question.

Likes

The 4 features people liked most about the village were:-

- Attractive Environment – 91%
- A lot of mature trees and woods – 90%
- Rural tranquility – 86% and
- Views and Wildlife – 85%



Opinion was divided on whether people wanted a shop, tea room or pub, with over 40% indicating that they did not want these.

Additional 'likes' in the comments ranged from "active village", "friendly people", "easy to get to other places for shops etc" and "High Santon great place to live".

Dislikes

50% disliked "damaged/uncut verges", "poor hedge maintenance" and "some walls/properties in a poor state".

41% disliked the lack of public transport.

Additional dislikes included selfish drivers, parking in inappropriate places (e.g. end of Carr Lane), littering and speeding on village roads. The overhead cables and the new street lighting were also regarded as out of character with the village.

Housing Growth

Respondents were asked for their views on housing growth within the next 5-10 years. 73% thought that housing development was about right at present, but 21% would support more growth if needed. There was no support for significant housing growth.

With regard to the positioning of new homes, if needed, just over half thought these should be on the edge of the settlements, a third within the main settlement but, significantly, only 7% thought that infill between properties was appropriate.

What is important?

Significant areas of importance were:

- "safe neighbourhood"
- "retaining open spaces"
- "access for people with disabilities"
- "unspoilt countryside"
- "local health and caring services" and
- "appropriate housing"



Respondents made additional comment such as:

- "the views across the Ancholme Valley are important and should be preserved at all costs"
- "Appleby is special for the fact that it is not overbuilt and more housing would ruin what is such an admired village" and
- "the present character of the village is priceless and should be maintained without any future development"

Section 2 – ENERGY AND PROMOTING SPECIFICS

This section asked residents' opinion about the development of Renewable Energy systems, oil and gas exploration around the Parish and also about promoting specifics.

Energy Overview

The vast majority of respondents to the survey were against large scale industrial development of any kind. Smaller developments divided opinion. Large scale wind farm development scored the highest Totally Opposed score (84%), when compared to fracking (80%), oil exploration (71%) and large scale solar farms (66%). Some tolerance exists for small scale renewable energy sources in appropriate, or "remote" areas. Individual solar systems would be acceptable, but there was no great enthusiasm from the majority of respondents for renewable energy sources. (Continued top of page 3)

(Continued from page 2)

Considered alongside the value that residents place on the preservation of the Ancholme Valley, it is not surprising that any large industrial development would be unwelcome.

Promoting Specifics

Nearly all respondents were in favour of retaining or increasing the provision of green space, enhanced protection of historic buildings and landscape and positive management of wildlife. A considerable majority were in favour of improvement to local roads, improving the standard of appearance of the Parish, improving the quality of grass verges and reducing inconsiderate parking.



Creation of cycle paths divided opinion, as did the provision of affordable housing and encouragement of further small local businesses.

Additional comments substantiated these views, with comments such as “the character of the older houses and buildings, but especially the Church and Village Hall, should be properly maintained”. The walks around the Parish were also spoken of favourably.

The Future

95% of respondents either agreed or strongly agreed with the question “Do you think that any future development in the Parish should be in keeping with the existing landscape and character setting?”

Section 3 – TRAFFIC, ROADS & FOOTPATHS

Traffic

Respondents were split almost equally (49%/48%) on whether traffic is a problem in the parish. However, the following specific needs were identified:

- to address speeding vehicles on Ermine Street and (to a lesser extent) on Risby Road by greater use of speed enforcement and by the introduction of some traffic calming measures (other than speed bumps)
- to ban, or at least reduce, the number of HGVs going through the Parish (it was already known that this was a problem in Santon, but it is clear that it also applies to Appleby as well)
- to find a way to restrict the size of tractors, agricultural and other vehicles using the lanes of Appleby because of the damage they do to verges etc
- to make Risby Road a less desirable ‘rat-run’ or, at the very least, substantially improve and thereafter maintain it, so that it can safely accommodate the volume of traffic which now uses it

Roads & Pavements

An overwhelming majority of respondents (64%/30%) did not consider that the roads, pavements and verges within the village of Appleby to be sufficiently well maintained.

Issues for respondents were:

- Over half of those who provided comments (17/33) drew attention to the poor (and in some cases apparently dangerous) condition of the footpaths around Appleby, with particular mention being made of the path from Appleby to the railway crossing and those on Church Lane and School Lane
- A further quarter of respondents highlighted the problems caused by farm machinery in the form of damage to grass verges, particularly within the Conservation Area, and, at harvest time, to the careless deposit of surplus straw on the road surface, leading to blocked storm drains and the consequential risk of flooding
- Overgrown domestic hedges
- Overhanging trees on Church Lane need better management to reduce leaf and debris fall, a build up of moss and water damage to the road surface
- The need for better cutting/maintenance of grass verges
- The need for better monitoring of the state of roads, paths and verges by the Parish Council and North Lincs Council

Footpaths & Byways

A majority (54%/42%) of respondents thought there were insufficient footpaths and bridleways in the parish. There was surprising unanimity about what needed to be done, namely:

- work with local landowners to improve and maintain existing bridleways and rights of way and to identify and open up both ancient footpaths and new amenity tracks (for walkers and cyclists) both within the parish and to link with other villages
- better signs for recreational walks and cycle tracks

Section 4 - ST BARTHOLOMEW'S responses to this section at the top of the adjacent column

Section 5 - ANYTHING TO ADD? as yet to be analysed and reported on

Results Cont:

Section 4 - ST BARTHOLOMEW'S CHURCH

An average for all topics showed that 67% of the respondents showed that the church was regarded as important, very important or of great importance.

Examining the responses by topic, the survey shows that the most importance is attached to the church's value as a heritage site (80%), followed by 74% as a burial ground, 71% for weddings, 70% for religious use, 69% for christenings with approximately 60% for regarding it as important for mixed use.

In contrast, only 9% (on average) considered that any of the topics were of no importance.

Village Hall Survey

A few months back the Village Hall committee undertook a survey a summary of which is as follows

84 questionnaires were returned. Of that number, 100% made use of the Village Hall in some way with a similar percentage number supporting a proposal for a community cafe in the Village Hall.

There were a number of suggestions for different types of activities and events.

The support for the Village Hall suggests that residents value the Village Hall socially as a meeting point and also for more formal functions, such as Parish Council meetings. (This is echoed by the response to the Neighbourhood Plan questionnaire, which confirms that residents value the Village Hall as a structure and the facility it offers to the Community.)

Is there an artist in you?

Have you ever had a yearning to paint in water colours or oil but don't know how to get started or maybe you are a dab hand and in need of some advice to help you improve?

If so then the TAGG Art group may be just what you are looking for.

The group, run by Bill Belshaw, meet in Appleby Village Hall. Presently there are two weekly classes:

Wednesday afternoon OIL PAINTING
2pm to 4pm

Friday afternoon WATER COLOUR
PAINTING 2pm to 4pm

The classes are from new starters through to artists who exhibit in their own right.

Method of tuition; Bill brings a picture of a painting and shows how to draw it and then paint it. Most people can complete it in 2 hours. The charge is £7 per person per class.

The more experienced may wish to paint their own work so Bill is on hand to offer advice and assistance when required.

Bill is considering starting an evening class providing there is a minimum of 5 people interested.

The year concludes in August with an exhibition at the Waters Edge Centre in Barton upon Humber. This for the last 5 years has been well received.

Interested? Go along to a session and see how you get on.

Flower, Presentation and Producer Show The Results!

Most Points – Fruit & Vegetables. Rick Prior
 Most Points – Flowers. Laura Prior
 Most Points – Crafts and Art. Anita Cross
 Most Points – Preserves. Anita Cross
 Most Points – Baking. Jenny Hook
 Most Points All junior classes under 11. Evie Bird
 Most Points – All junior classes 11 to 16. Ellen Williams
 Most Points – Eggs (Egg Cup). Mrs Chase
 Best Showstopper Challenge. Margaret Burgin
 Most Points WI - Suzanne Fernando
 Tallest Sunflower - Evie Bird with Henry Wright a close second
 Best in class Produce (fruit, veg, flowers). Rick Prior
 Best in class – Art & Craft. Thelma Richardson
 Best in class – Baking. Margaret Burgin
 Best in class – ALL juniors. Evie Bird
 Best Exhibit In Show. – Margaret Burgin
 Most Red Points. Di Midwinter (adult) and Ellen Williams (under 16)

Garden Awards 2015 Sponsored by Appleby Parish Council

Best Garden Awards

Rick and Laura Prior, School Lane
 Michael and Linda Turner, Carr Lane
 Colin and Thelma Richardson, School Lane

Planters

Bob and Carol Gregory, Church Lane
 Rick & Lisa Wilson, School Lane

Hedges

David and Diane, Ermine Street
 Bob and Elizabeth Hebblewhite, Churchside



Flower, Presentation and Producer Show

Ian Cross Chair Produce Show

Wow – what a day!

From well before 11am a steady stream of exhibitors helped turn the Village Hall into a veritable cornucopia of baking, produce and crafts. In total this years record breaking Produce Show hosted an incredible 443 entries from 73 exhibitors of all ages. The quality, creativity and artistry on show was truly breathtaking. For a small village in deepest, darkest North Lincolnshire, Appleby never fails to exceed expectations.

Once 'staging' had taken place the doors to the Village Hall were locked and a tranquillity descended as Judging commenced. What a task? The standards on show were exceptionally high and deliberations were correspondingly thorough. Some classes proved exceptionally difficult to judge - although they did manage to get the winner of Class 49 right!

After a hasty sandwich and cup of tea the doors were flung open wide at 4.30 to welcome a sea of eager faces – all keen to see how well they had done. The Hall was soon reverberating to the traditional combination of prize winning whoops of joy and grumbles! All in very good spirit! The main hall was hastily re-arranged to provide seating and the crowd fell quiet as the prize giving commenced.



The 'Best Kept' garden awards were presented by The Chairman of the Parish Council, Mr Derek Hall. These awards are judged on three occasions during June, July and August. What a task? The standards around the village have improved significantly in recent years. The judges were keen to point out that there were precious few 'losers' and far too many 'winners' to name all individually. Well done Appleby - lets all help keep those standards high!

A new award was presented this year – The Steve Moody Trophy, which went to Rick and Laura Prior for their 'Best Garden'. Steve was a staunch supporter of the show. His skills, good humour and numerous prize winning exhibits are remembered with much affection by many – he will be missed.



Then came the 'Most Points' and 'Best in Class' awards. Special mention must go to Margaret Burgin, who's Thatched Cottage Cake was a masterpiece, truly stunning – and very tasty too! Once again Evie Bird excelled in the Under 11 Classes. A full report illustrated with many photos of exhibits and award winners has been published on the village website – www.Appleby-lincs.co.uk

After the presentation of the awards the show was rounded off by the ever popular and lively Auction of Exhibits and Prize Raffle. The audience were initially stunned then delighted by the virtuoso performance by Ken Pritchard as auctioneer. What a star! The funds raised will help to keep the show viable. Thank you to all those who contributed so generously.



Thanks to our Judges – they undertook their herculean tasks with consummate skill, authority and much good sense. Thanks too to our Sponsors and all who gave their time so generously and helped put the show together – it doesn't happen by accident! But most of all – thank you to all the exhibitors, old and new, who made this years event such a resounding success.

The Produce Show owes it's longevity and place in the heart of our community to Ralph Welch and Col Worsley. We owe them a sincere debt of gratitude. The show really does capture a very special aspect of traditional village life. There is a real sense of community spirit. If you came to the show you'll know exactly what I mean, a sincere thank you. If you didn't, come along and give it a try next time! With 113 Classes; from art and craft, through produce to horticulture, open to residents, close family and those with strong connections to the village, there is something here for everyone.

Finally, it appears that I was wrong – yet again – about the history of our beloved show. Contrary to previously held beliefs, this years show was not the 40th or even the 48th. It was actually the 49th! A programme, annotated 'first show' has been discovered - proving beyond all reasonable doubt that the inaugural show was held on the 4th Sept 1966. Which means . . . next year will be the 50th Anniversary of the show – almost to the day! No prizes for guessing next year's theme! We fully intend making it a day to remember! Further details will be circulated shortly.



Appleby WI

Article by Sheila Rhodes President, APPLEBY WI

July - Outing to Rose Farm Dairy and Ice Cream Factory, it was a most enjoyable evening. On arrival we had a tour of the farm, met the animals, had a tour of the milking parlour and saw how the ice cream was made. Afterwards we all enjoyed the ice cream of our choice and a glass of wine.

August - Our annual garden meeting was held at the home of Joanne Davey. It was a most beautiful evening and we all enjoyed a BBQ cooked by Joanne's husband and Son. We spent the rest of the evening exploring the delights of their garden.

September - This month we had Allison Walling (Lincoln Willow) a local willow grower and weaver of willow. She brought many items which she had woven and made for us all to see. She gave us a most informative talk on willow growing and the many types available.

The 100 years celebrations of the WI has continued throughout the year with various events and happenings within the WI Regions. During our September meeting we celebrated at Appleby with cake and wine. The cake was made by one of our members and was cut by our longest standing member of Appleby WI, Mrs Sheila Davey and myself.

Future events see Dates for your diary on page 6

NEW MEMBERS ARE ALWAYS WELCOME

Contact ANN DRURY, Secretary 01724 735178



Village Hall Refurbishment..... Update

Paul Johnson Chairman. Village Hall Management Committee

In May of this year grant applications were made to three organisations to raise funds for the repair and refurbishment of the village hall. (Waste Recycling Environmental Ltd, (WREN), North Lincolnshire Council, and SSE, (energy suppliers) Those of you familiar with the hall will have seen the presentation material outlining the project and details of this were circulated to households in April as part of a questionnaire.

The estimated costs of this project currently stand at approx. £41,000. To date we have secured £13, 000 from the SSE sustainable development fund and £15,000 from NLC community fund. We are waiting for a response from the WREN group and their decision should be made in November. As always the management committee continue to organise events to raise money to support the halls maintenance and development.

The confirmation of funding means we will shortly begin some of the work involved, repairs to the building and installation of new doors and windows.

Further works will lead to a temporary closure of the building, repairs to the floor, re-carpeting and internal repairs and decoration. Hopefully this will be scheduled so as to cause as little disruption to the use of the hall as possible and we apologise in advance for any inconvenience caused to the village activities.

Best Kept Village Award

The awards in the Small Village Group which included Appleby were:

- 1st Worlabby
- 2nd Elsham
- 3rd Saxby all Saints

Appleby was not placed.

Appleby Open Gardens and Scarecrow Challenge

John and Rosemary Jeremiah

Appleby Open Gardens and Scarecrow Challenge took place in the village on 9th August. The weather was perfect and 14 gardens plus the church were open to the public.

Appleby WI and other volunteers worked hard in the village hall providing refreshments all day, which included superb ploughman's lunches and afternoon teas.

An inventive collection of scarecrows was on show around the village greeting the many visitors.

Music was played and floral displays from villagers decorated the church. There was also a selection of water colour paintings displayed by local artist Bill Belshaw. In addition an assortment of delicious ice creams was available from Roe's Farm Dairy who were sited in the churchyard.

Many thanks to all the residents who opened their beautiful gardens, the WI, those who donated raffle prizes and to the many people who helped to make the day such a success including the generous anonymous donor who paid for the hire of the village hall.

Special thanks go to Rick and Laura Prior who organised the event, Pam and Alan Palmer who organised the catering and to the many volunteers who worked tirelessly helping to raise an amazing £3,003 for the benefit of St. Bartholomew's Church.

Many thanks to you all

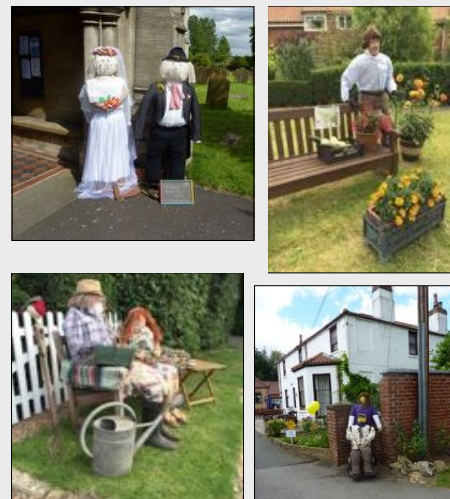
The awards for the best scarecrow were:

Adult

- 1st Anita Cross
- 2nd Wendy Marshall
- 3rd Ivor Keyes

Junior

- 1st Henry Wright
- 2nd Emma & Thomas Hutchison
- 3rd Harrison and Jacob Scott



HGV Issues

Ivor Keyes

As a result of concerns expressed by residents in Santon and Appleby, the Parish Council have been meeting with local groups for the past 18 months to try to reduce the number of HGV's through the Parish in general, but particularly at Santon and on Ermine Street Appleby.

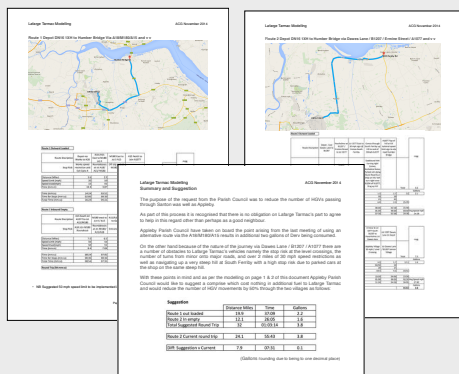
We had another meeting with North Lincs Council, TATA, Lafarge Tarmac, the Highways Agency and traffic police on 6th July where it was agreed to reduce the speed limit on Dawes Lane through High Santon to 20mph.

TATA steel agreed to allow HGV's from the steelworks site to use their internal roads to exit directly onto Mortal Ash Hill and that their attendant at the barrier on Dawes Lane would inform drivers of the route through the steelworks. That situation would then be monitored for compliance.

North Lincs Highways agreed to monitor the traffic using the Castlethorpe turn off from the A18 which is currently an HGV route to Ferryby.

The new speed restriction signs at Santon are currently being erected. We have another meeting with the same groups on 12th October for further discussions.

Sample of the Parish Councils papers produced and presented as discussion documents



Village Hall Repair Closure

To allow for essential repair work to be carried out parts or the whole of the hall is likely to be closed on some dates between 23 November to 6 December. If you are planning a function and wish to hire the hall during these dates please check first with Audrey on 734185.

Quiz Night

At the Village Hall Friday 30th October 7:30pm
Entry £4pp
Contact Audrey on 734185 to book.

Bingo

Need information? Contact Elizabeth on 733359 or Anne on 733581

This newsletter, in colour, is also on the Appleby Website hosted by www.appleby-lincs.co.uk
Compiled and distributed by Andrew Fowler & Ivor Keyes
Winter Edition out on 4 December 2015



Neighbourhood Watch Update.

Ivor Keyes Neighbourhood Co-ordinator

A neighbourhood Watch meeting was held on 5th August in the Village Hall. There was a good turn out of 30 plus residents who were able to ask questions of Humberside Police and Crime Commissioner, Matthew Grove, Neighbourhood Police Officer, PC Vince Potter, and Safer Neighbourhoods Officer, Tracey Coyne.

It was a lively meeting and Mr Grove stood for close on two hours to answer the questions put, which were generally concerning the lack of Neighbourhood Policing in our Parish. PC Potter answered questions about PCSO's (Police Community Support Officers) and the difficulty for Neighbourhood Policing since Humberside Police re-organisation, and Tracey Coyne spoke about the supporting role of the Safer Neighbourhood organisation. Mr Grove said that he was pleased to see such a well attended meeting, and that his attraction to his role was due primarily to his belief in Neighbourhood Policing. However, he pointed out that financial constraints had led to a re-organisation of Humberside Police Force and that cybercrime was becoming a high profile priority, but he was committed to providing a high quality service for the region and would continue to work towards that goal.

One of the main concerns raised by residents was the functioning of the 101 telephone reporting service and the lack of local Policing knowledge. Mr Grove took those concerns on board. Residents also expressed concerns about the visibility of Neighbourhood Police around the Parish. A number of broader Policing issues were also touched upon.

I'm pleased to say that from my own more recent experience of the 101 services, and reports from other residents, that there has been an improvement in that service.

Just as a reminder; If you have any concerns that you feel need to be reported to the Police, telephone 101 and follow the instructions given. You will be connected to speak to a member of the Police Force where you can report a crime or any other issue. It is important to continue to report crime, or suspected criminal activity. In Emergency continue to ring 999.

Crime figures for the Parish since the last Newsletter are briefly: 4 thefts, 3 burglaries, 2 cases of criminal damage, 1 fear or provocation of violence.

Ours is a quiet community, but we are neither immune to, nor exempt from, crime. We can help ourselves greatly if we make our properties and belongs secure.

Dates for your diary

Village Hall

30 October 7:30pm Quiz Night

2 November 7:00pm Parish Council Meeting

30 November 7:00pm Parish Council Meeting

Provisional 23 November to 6 December Village Hall refurbishment and repair some areas may be closed during these date

Bingo Every 2nd Wednesday at 7pm:

Dates: 21 Oct, 4 Nov, 18 Nov & 2 Dec

WI

13th October - growing maples, The Hippopottering Nursery (Chelsea Flower Show Winners).

10th November - Chinese Cooking with May Ling.

8th December - Christmas Party, 7pm start.

Other Events

Every Wednesday and Friday 2:00 to 4:00pm TAGG Art Group

St Bartholomew's Church

Sunday services usually held at 9.15 am on the first Sunday of the month or 8.00am on the third.

Mobil Library every 3rd Wednesday

Haverholme House 09:40 - 10:10 am Beck Lane 10:20 - 10:45 am

Dates: 14 Oct & 18 Nov